

**Disposable Peripheral Nerve Block Needle-MM**

**Intended Use:**

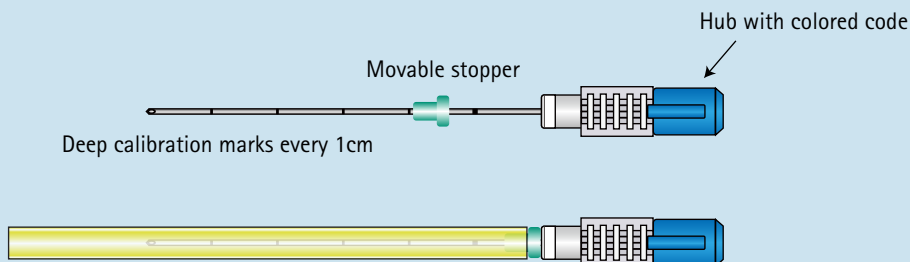
Nerve Block Needle is intended for the administration of local anesthetic agents to provide regional anesthesia or the administration of anti-inflammatory medication to relieve chronic pain conditions.

**Overview**

- 1. The blade tip is cut back and ground to an angle of 30°, and then cut back again for a finish that provides just the right amount of puncture resistance. The needle keeps its edge without nicking far better than Lancet needles, making this a very safe design.
- 2. The cannula has deep calibration marks every 1 cm. Used with the attached movable stopper, extremely precise insertions can be achieved.



Identification of ISO 80369-6 is Yellow color protective needle cover



Specification		8 digits are product code for ordering					
Gage	Length	40mm	60mm	80mm	100mm	120mm	140mm
20G			27112036	27112046	27112056	27112066	27112076
21G			27112126	27112136	27112146	27112156	27112166
22G		27112206	27112236	27112256	27112266	27112276	27112286
23G		27112316	27112326	27112336	27112346	27112356	27112366
24G		27112426	27112416				
25G		27112516	27112526		27112546		

**Package & delivery unit**

Individually packed and 10pcs/box E.O.G.sterilized

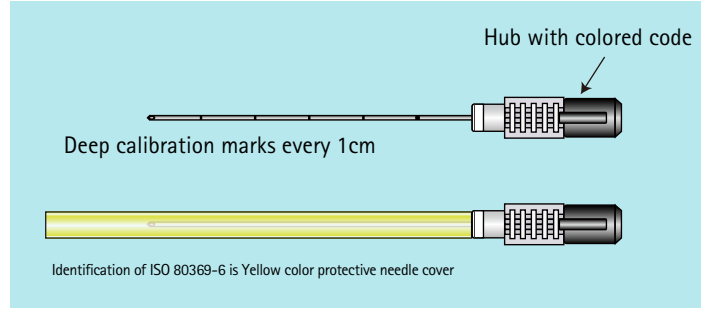
**Disposable Peripheral Nerve Block Needle-PM**

**Intended Use:**

Nerve Block Needle is intended for the administration of local anesthetic agents to provide regional anesthesia or the administration of anti-inflammatory medication to relieve chronic pain conditions.

**Overview**

- The cannula has deep calibration marks every 1 cm.  
None attached movable stopper.



Specification		8 digits are product code for ordering				Package & delivery unit
Gage	Length	60mm	80mm	100mm	120mm	
21G			27112706	27112716	27112726	Individually packed and 25pcs/box E.O.G.sterilized
22G		27112736	27112746	27112756	27112766	
23G		27112776	27112786	27112796		

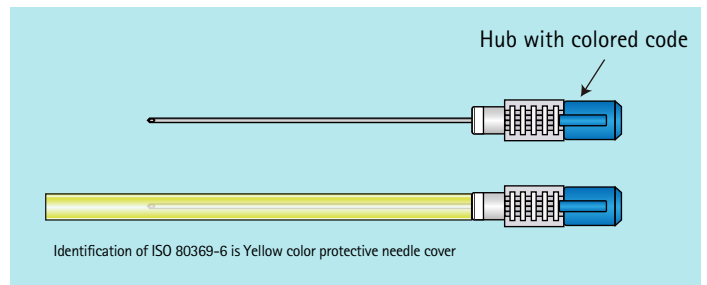
**Disposable Peripheral Nerve Block Needle-KT**

**Intended Use:**

Nerve Block Needle is intended for the administration of local anesthetic agents to provide regional anesthesia or the administration of anti-inflammatory medication to relieve chronic pain conditions.

**Overview**

- No attached movable stopper and no deep calibration marks on cannula.



Specification								Package & delivery unit	
Gage	Length	50mm	60mm	70mm	90mm	100mm	120mm		140mm
21G					27113076	27113086	27113046	27113096	Individually packed and 25pcs/box E.O.G.sterilized
22G		27113016	27113026	27113036	27113066				

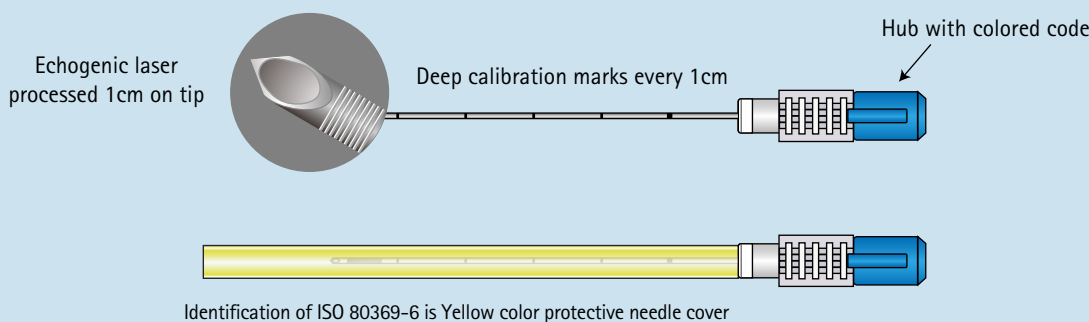
**Disposable Nerve Block Needle(Echogenic) PM-Echo**

**Intended Use:**

Nerve Block Needle is intended for the administration of local anesthetic agents to provide regional anesthesia or the administration of anti-inflammatory medication to relieve chronic pain conditions.

**Overview**

- 1. The blade tip is cut back and ground to an angle of 30°, and then cut back again for a finish that provides just the right amount of puncture resistance. The needle keeps its edge without nicking far better than Lancet needles, making this a very safe design.
- 2. The cannula has deep calibration marks every 1 cm.
- 3. Echogenic processed on tip for needle visualization to be achieved clear and extremely precise insertions.



**Specification**

Product Code	SIZE and Model	colored code	Package & delivery unit
27110206	22G x 50mm <b>PM - Echo</b>	<b>Black</b>	Individually packed and 25pcs/box E.O.G.sterilized
27110216	22G x 70 mm <b>PM - Echo</b>		
27110226	22G x 100mm <b>PM - Echo</b>		
27110306	23G x 50mm <b>PM - Echo</b>	<b>Blue</b>	Individually packed and 25pcs/box E.O.G.sterilized
27110316	23G x 70mm <b>PM - Echo</b>		
27110326	23g x 100mm <b>PM - Echo</b>		

- Please read carefully enclosed Instruction for use prior to use.
- IFU shows Instruction for use, warnings, contraindications, etc as important information.

**Echogenic Stimulating PNB Needle Type**  
**Echogenic None Stimulating PNB Needle type**

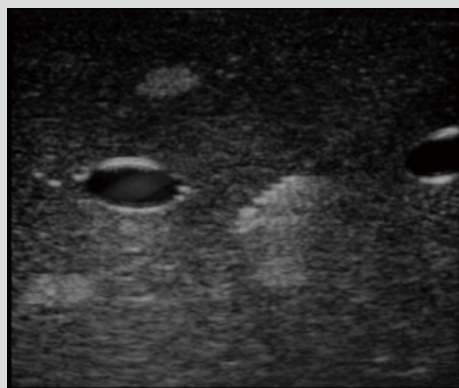


**Intened for use**  
 PNB

**Overview**

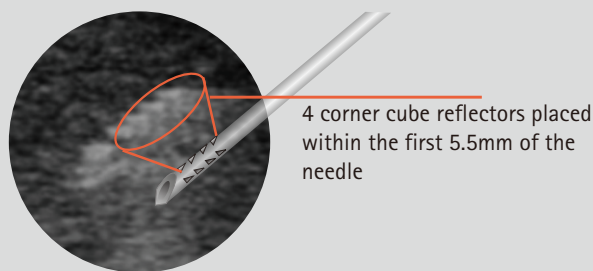
- 3 type specification as follows;
  - Stimulating coated  
 Insulated needle with corner cube reflectors (CCR-type).
  - None Stimulating fuction  
 Echogenic (USG type CCR)
- CCR processed for Needle visualization in ultrasound-guided regional anesthesia.
- Ergonomic needle hub for precision grip
- Hakko also is available universal electrical stimulator "Rashin Plex" for electrical nerve stimulation.

【Photo】  
 None-insulated needel (USG Type CCR φ 0.8)



【Samples】  
 Blue Phantom™  
 Select Series Peripheral Nerve Block

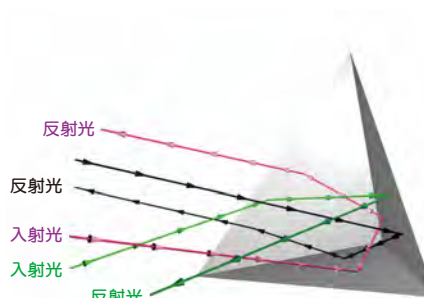
【Ultra sound machine】  
 Sonosite  
 Micro Maxx  
 transducer:HFL38/13-5MHz



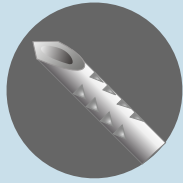
**Corner cube reflector (CCR)**

CCR stands for "corner cube reflectors," and these multi-angled surfaces reflect sound waves back to the transducer, making the needle appear brighter and clearer on screen. These surfaces offer a number of advantages, including improved shaft and needle tip visibility, thus making the needle more echogenic. CCR marks ensure more exact needle placement in ultrasound-guided procedures like peripheral nerve blocks and muscular skeletal injections, and allow you to see the needle and anesthetic in real-time.

Patent No.:700057  
 Pub. No.: US 2009/0137906 A1  
 PCT NO: PCT/UP2005/O13603B1



## Type CCR

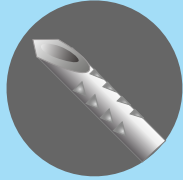


Bevel angle : 25°  
CCR processd for Echo

Electrical lead is compatible with most nerve stimulators:5cm length

Extended length of injection tubing :5cm length

## USG Type CCR



Bevel angle : 20°  
CCR processd for Echo

Depth mark every 1cm

Extended length of injection tubing :5cm length

## Specification

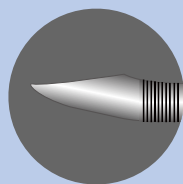
Product code	Size		Bevel Angle	Insulated	Echogenic	Depth amrk	Electric al lead	injection tubing
27131016	$\phi 0.7$ (22G) $\times$ 50mm	Type CCR	25°	○	☆	-	○	○
27131026	$\phi 0.8$ (21G) $\times$ 70mm		25°	○	☆	-	○	○
27131036	$\phi 0.8$ (21G) $\times$ 100mm		25°	○	☆	-	○	○
27131046	$\phi 0.8$ (21G) $\times$ 50mm		25°	○	☆	-	○	○
27131056 *	$\phi 0.8$ (21G) $\times$ 120mm		25°	○	☆	-	○	○
27131066 *	$\phi 0.8$ (21G) $\times$ 150mm		25°	○	☆	-	○	○
27132016	$\phi 0.7$ (22G) $\times$ 50mm	USG Type CCR	20°	-	☆	○	-	○
27132026	$\phi 0.7$ (22G) $\times$ 70mm		20°	-	☆	○	-	○
27132036	$\phi 0.8$ (21G) $\times$ 70mm		20°	-	☆	○	-	○
27132046	$\phi 0.8$ (21G) $\times$ 100mm		20°	-	☆	○	-	○
27132056 *	$\phi 0.8$ (21G) $\times$ 120mm		20°	-	☆	○	-	○
27132066 *	$\phi 0.8$ (21G) $\times$ 150mm		20°	-	☆	○	-	○

### Package & delivery unit

Individually packed and 10pcs/box E.O.G.sterilized

This product is for ISO80369-6, Luer type product are not available to connect.

## Tuohy USG Echo



Laser etching for Echo  
10mm

Depth mark every 1cm from 2cm location of tip

Extended length of injection tubing :5cm length

## Specification

Product code	Size		Bevel Angle	Insulated	Echogenic	Depth amrk	Electric al lead	Injection tubing
27132516	$\Phi 0.7$ (22G) $\times$ 70mm	Tuohy USG Echo		-	★ <sup>※2</sup>	○	-	○
27132526	$\Phi 0.9$ (20G) $\times$ 100mm			-	★	○	-	○

### Package & delivery unit

Individually packed and 10pcs/box E.O.G.sterilized

This product is for ISO80369-6, Luer type product are not available to connect.